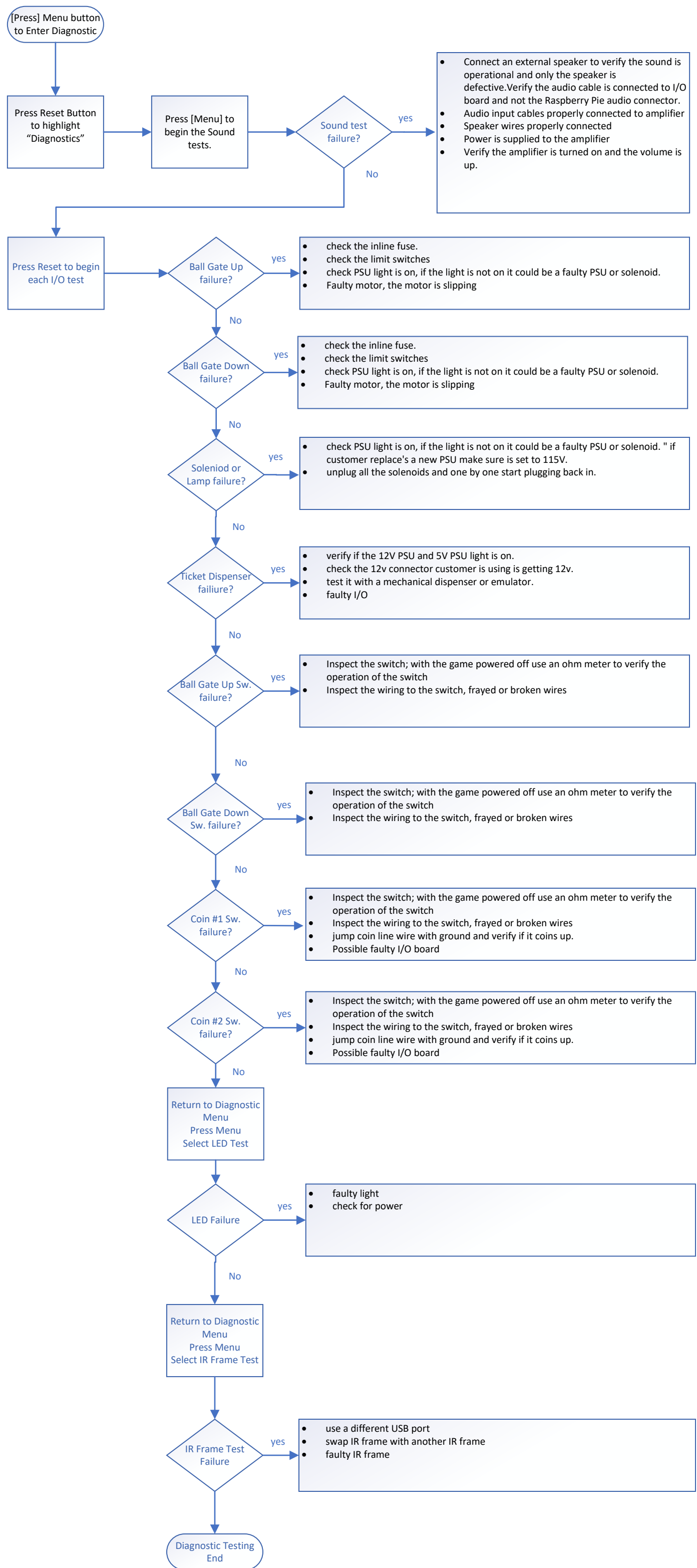


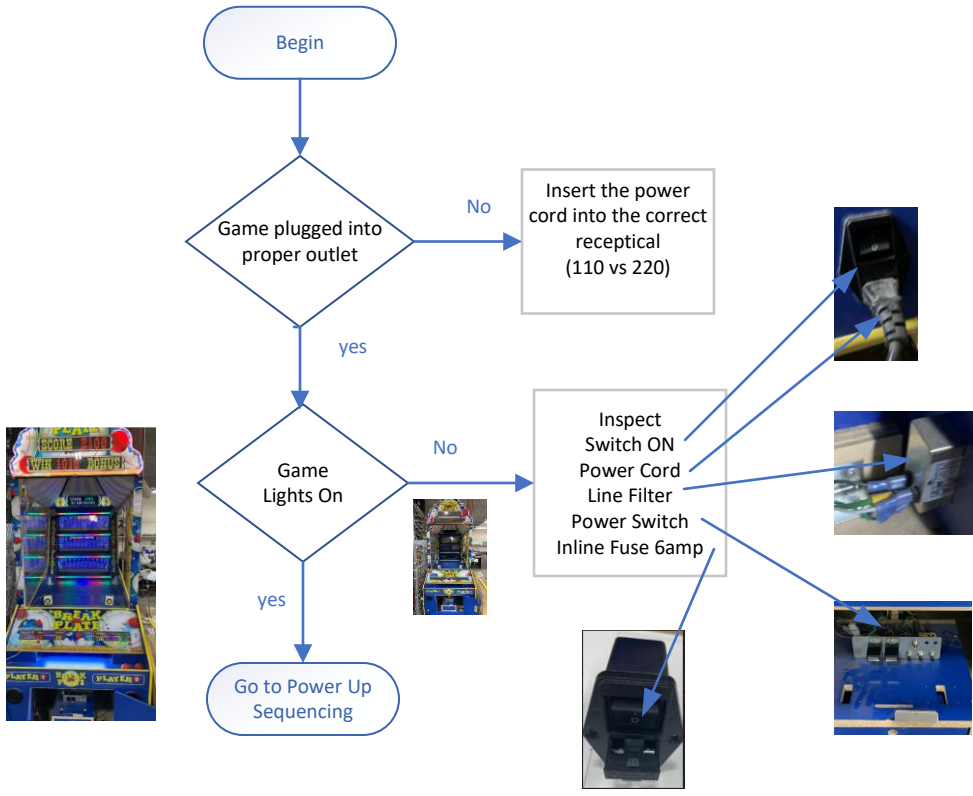
BREAK the PLATE

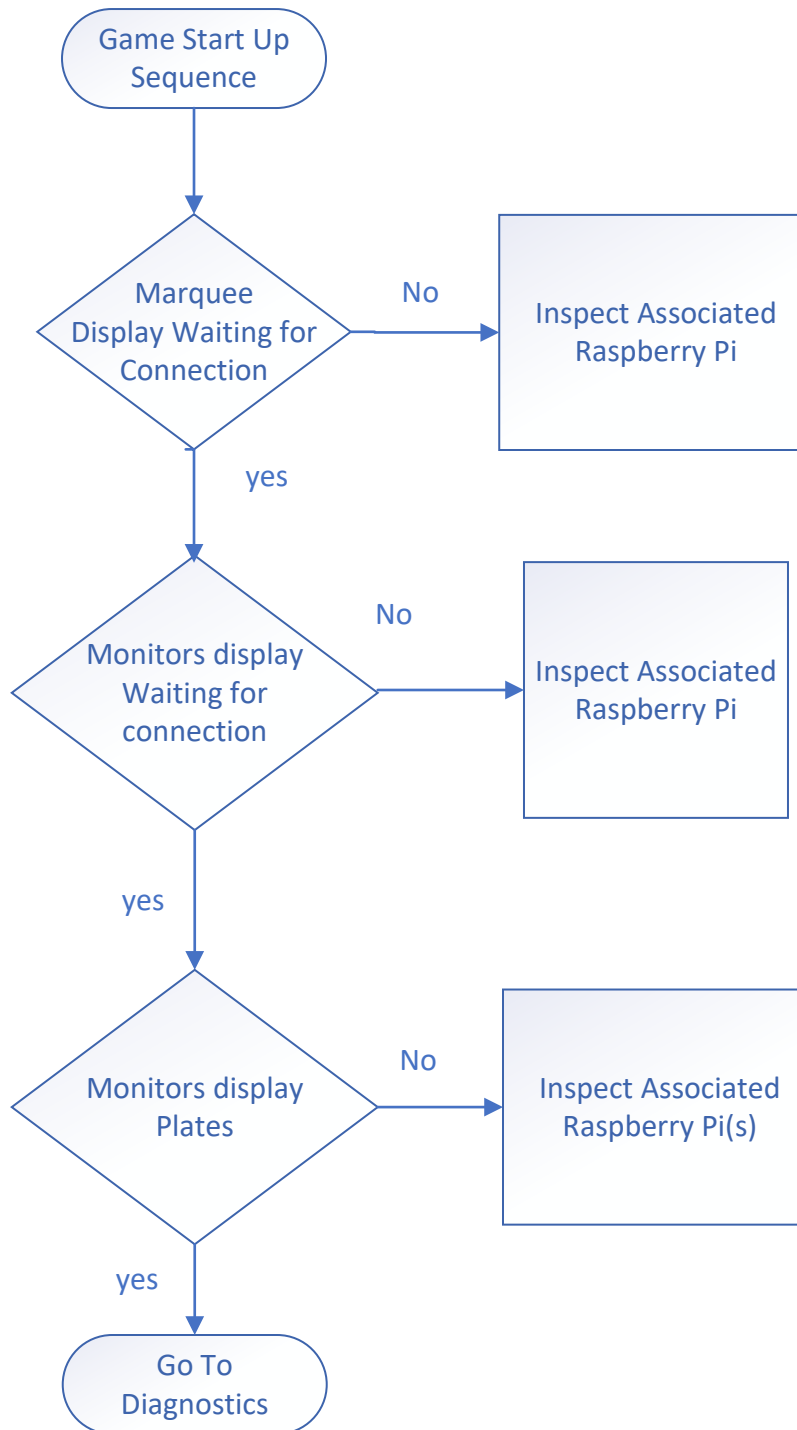


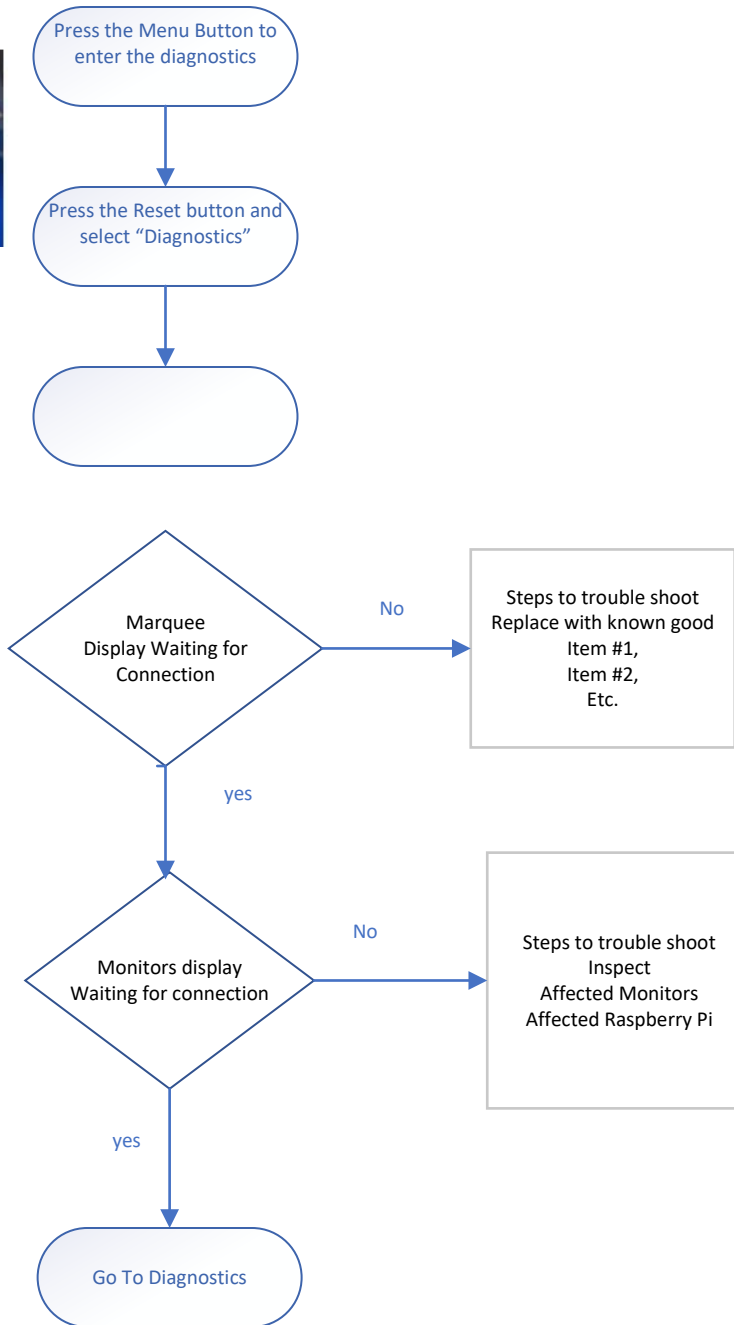
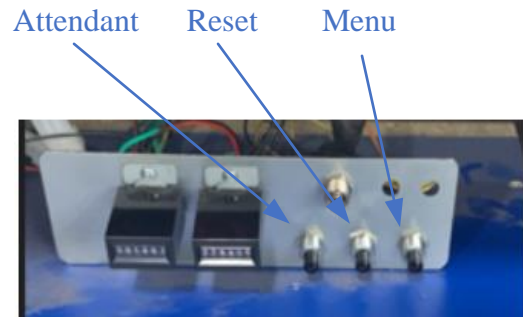
Break the Plate offers a rich set of diagnostics available to the gaming technician to identify failure's encountered.

Note: If an error code is displayed, you can bypass it by pressing the menu button constantly until you see the menu options appear.



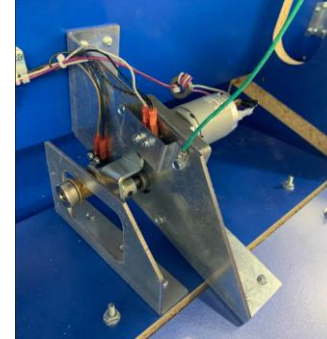
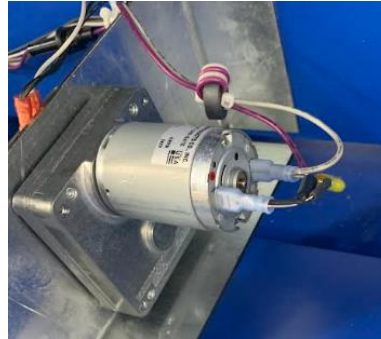
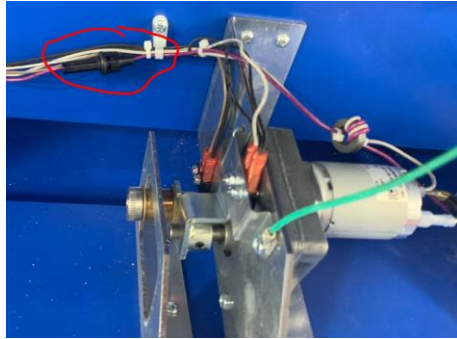






Ball Gate Failure

- No voltage (20vdc) measured at the motor; replace the 1 amp fuse (See image)
- Ensure there are no obstruction's or preventing the operation of the ball gate motor
- Inspect the two switches, secure and adjust alignment if needed
- Motor is receiving power but fails to operate the ball gate; possible stripped gears in the motor assembly; replace motor assembly, possible set screw on the cam is loose



Audio Failure



- Verify the audio cable is connected to I/O board and not the Raspberry Pi audio connector.
- Audio input cables properly connected to amplifier
- Speaker wires properly connected
- Power is supplied to the amplifier
- Verify the amplifier is turned on and the volume is set.